

DX / SPM

Stored Procedures Manager for DB2 / z



- Run, test and debug DB2 stored procedures and user-defined functions via an ISPF dialog based universal driver
- Exercise routines that require multiple input parameters and return multiple output parameters and result sets, without writing user code
- Augment the DB2 Administration Tool for z/OS with essential testing, debugging and control facilities
- View and manage z/OS facilities that are not visible to the workstation based DB2 Developer Workbench
- Define, display and manage all DB2 stored procedures and user-defined functions as well as the cast functions associated with distinct data types

Overview

DX/Stored Procedures Manager is an ISPF dialog that lets you develop, test, deploy and manage the DB2 server-side objects that encapsulate business logic and reduce network traffic. DX/SPM provides a simple, intuitive and effective means to work with DB2 stored procedures (SP's), user-defined functions (UDF's) and the cast functions associated with distinct data types (DDT's) — all natively on z/OS.

Benefits

- Manage and deploy all SP's, UDF's and DDT's — including external and native SQL stored procedures and table UDF's
- **REFRESH, QUIESCE** and/or **RESUME** the server address spaces associated with a WLM application environment
- **CREATE, ALTER** and display DDL
- Display routine status
- **START** and **STOP** stored procedures, UDF's and DDT's. These commands can act on individual routines, sets of routines or globally.

Example of Stored Procedure Invocation

DSNACCOR is an IBM supplied stored procedure that receives multiple input parameters and returns multiple output parameters and result sets. The panels and annotations on the next page illustrate and describe how DX/SPM can run the SYSPROC.DSNACCOR procedure without the need for user code to elicit input values, invoke the routine or display its output parameters and result sets.

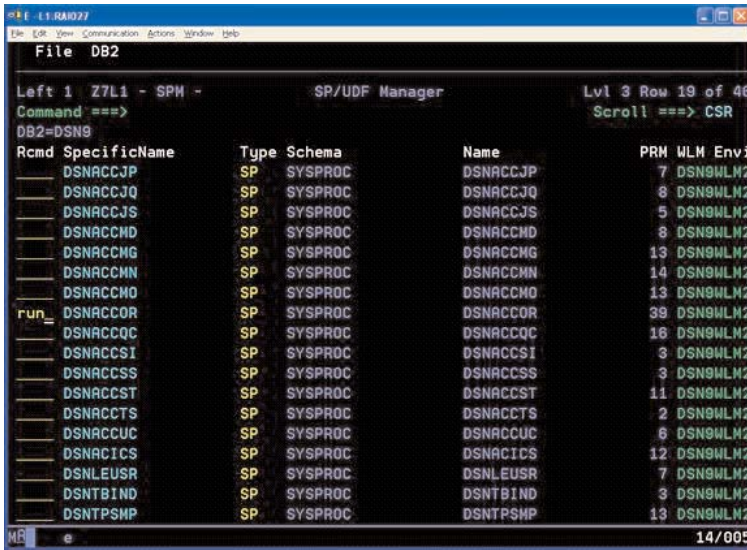


Figure 1 — RUN stored procedure SYSPROC.DSNACCOR



Figure 2 — DSNACCOR input parameter panel

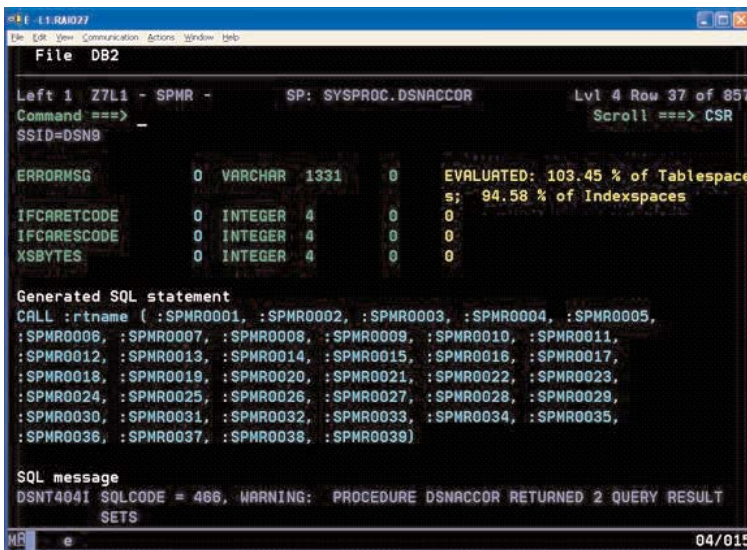


Figure 3 — after the CALL statement executes

Example of Stored Procedure Invocation

- (1) The SPM dialog starts with a scrollable summary (not shown) of DB2 subsystems and group attach names that are defined on the local z/OS image
- (2) Entering an SPM row command next to the desired subsystem displays a popup selection window (not shown) that lets you filter the set of routines displayed (and against which RUN row commands can be issued)
- (3) Figure 1 illustrates the scrollable list of stored procedures, user-defined functions and DDT cast functions that results
- (4) Next, SPM elicits input values for DSNACCOR through the scrollable, dynamically generated panel illustrated in Figure 2. SPM validates the parameter values you enter in accordance with their input data types.
- (5) Press ENTER to execute the stored procedure and display its output parameters and result sets. Figure 3 illustrates the output values returned by DSNACCOR, the SQL statement generated by SPM to invoke the procedure and the SQL message text translated from the SQLCA returned with the CALL statement. The display is scrollable so you can view additional output including the first 20 rows of each result set returned by the procedure (not shown).

Product names are the trademarks or registered trademarks of their respective holders.

**Harness the power of
DB2 SP's, UDT's and DDT's
via a simple and
intuitive ISPF dialog**

**Call the DB2 for z/OS experts at
800 776-0771**